



Image 1: Red Imported Fire Ant small mound



Image 2: IFA small mound

- Note: Small entrance holes, or “craters,” can be observed when looking closely at an IFA mound.



Image 3: Large IFA Mound

- Note: Mound was approximately 10 inches tall at time of picture.



Image 4: Large IFA Mound

- Note: Mound was approximately 1 foot wide at time of picture.



Image 5: Large Mound, Disturbed

- Note: This is an image of a disturbed mound, you cannot tell very well but there are hundreds of fire ants coming out of the mound.



Image 6: Fire Ant Mound

- Note: IFA mounds can often be found near electric boxes, water meters, water tanks, piping, etc., as these things often provide warmth and structure. They prefer undisturbed soils in sunny areas.



Image 7: Red Imported Fire Ant

- Note: Zoomed in image.

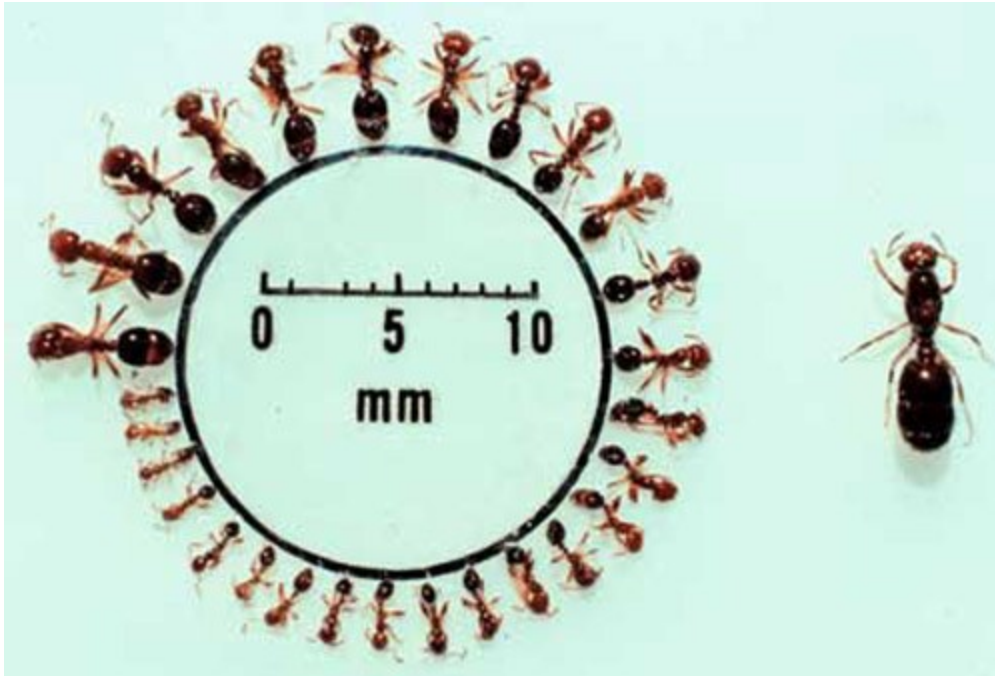


Image 8: IFA in various life stages.

- Note: unlike most ants, IFA will be found with a variation of sizes. Finding ants of various sizes from the same mound is a good indicator of fire ants.



Image 9: IFA of various sizes and winged adult.

- Note: Winged adults are the reproductive ants, mating flights usually occur in the spring or summer after heavy rainfall.





Image 10: IFA of various sizes, displaying climbing behavior.

- Note: IFA are great climbers, and will climb up legs if someone stands in their mound. A good way to check if a mound is IFA is to stick the mound with a poker or stick. If it is IFA, they will begin climbing the stick rather aggressively. If it is not fire ants, they will likely not have a drive to climb all the way up the stick.